

A decorative graphic on the left side of the slide, consisting of several concentric, semi-transparent gray circles of varying thicknesses, creating a tunnel-like or ripple effect.

HIKVISION

Introduction of iVMS-4200 v2.0

Contents

HIKVISION



Brief Introduction

Functions and Features

Specification

- iVMS-4200 is a free management software for Hikvision DVR, NVR, IPC, encoders, decoders, etc.

Application

- Powerful Device Management
- Powerful Event Management

Price

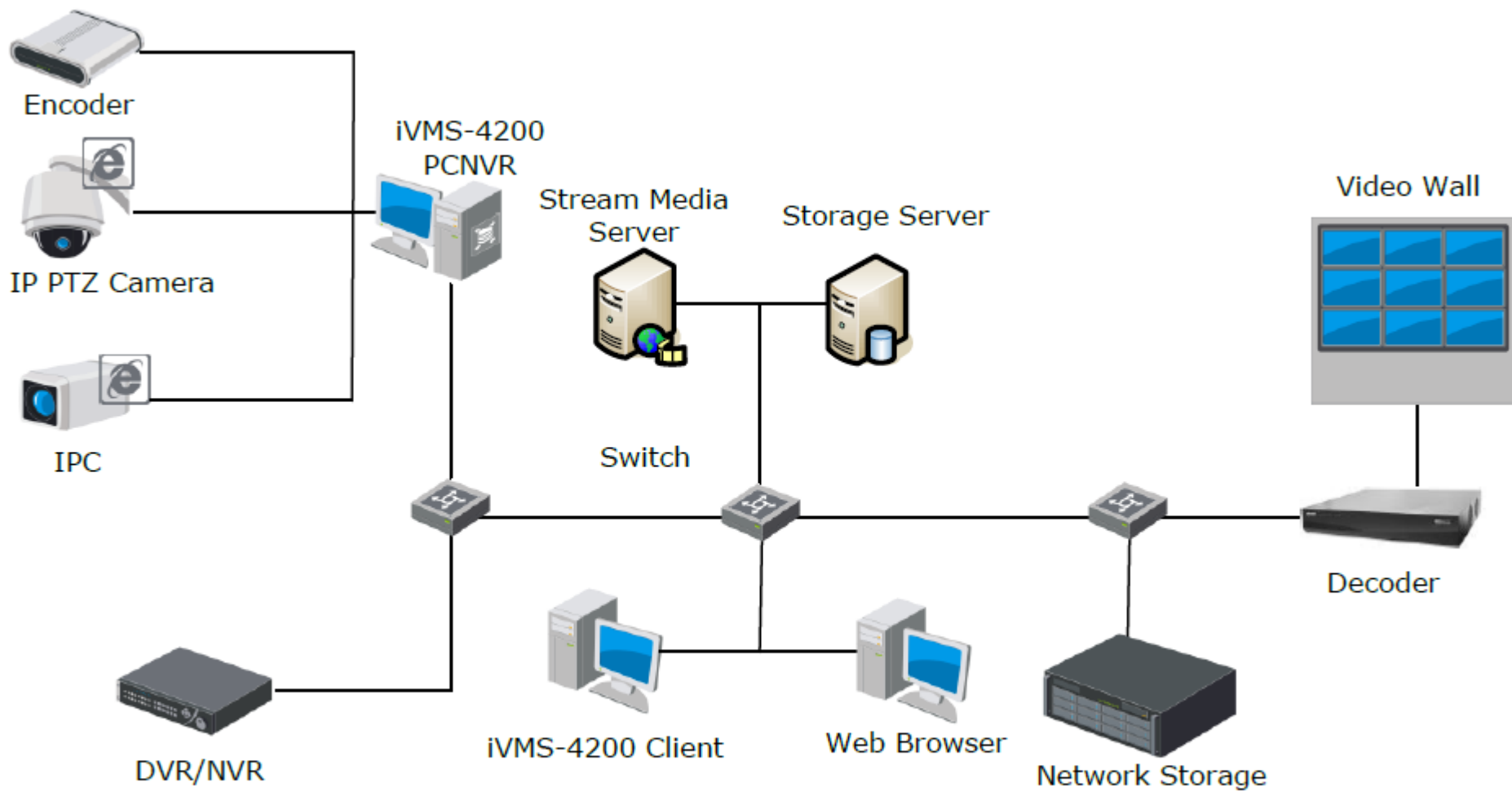
- Free to Install
- Free to Upgrade

Usability

- Friendly GUI
- Web Access

Typical Application

HIKVISION



Contents

HIKVISION



Brief Introduction

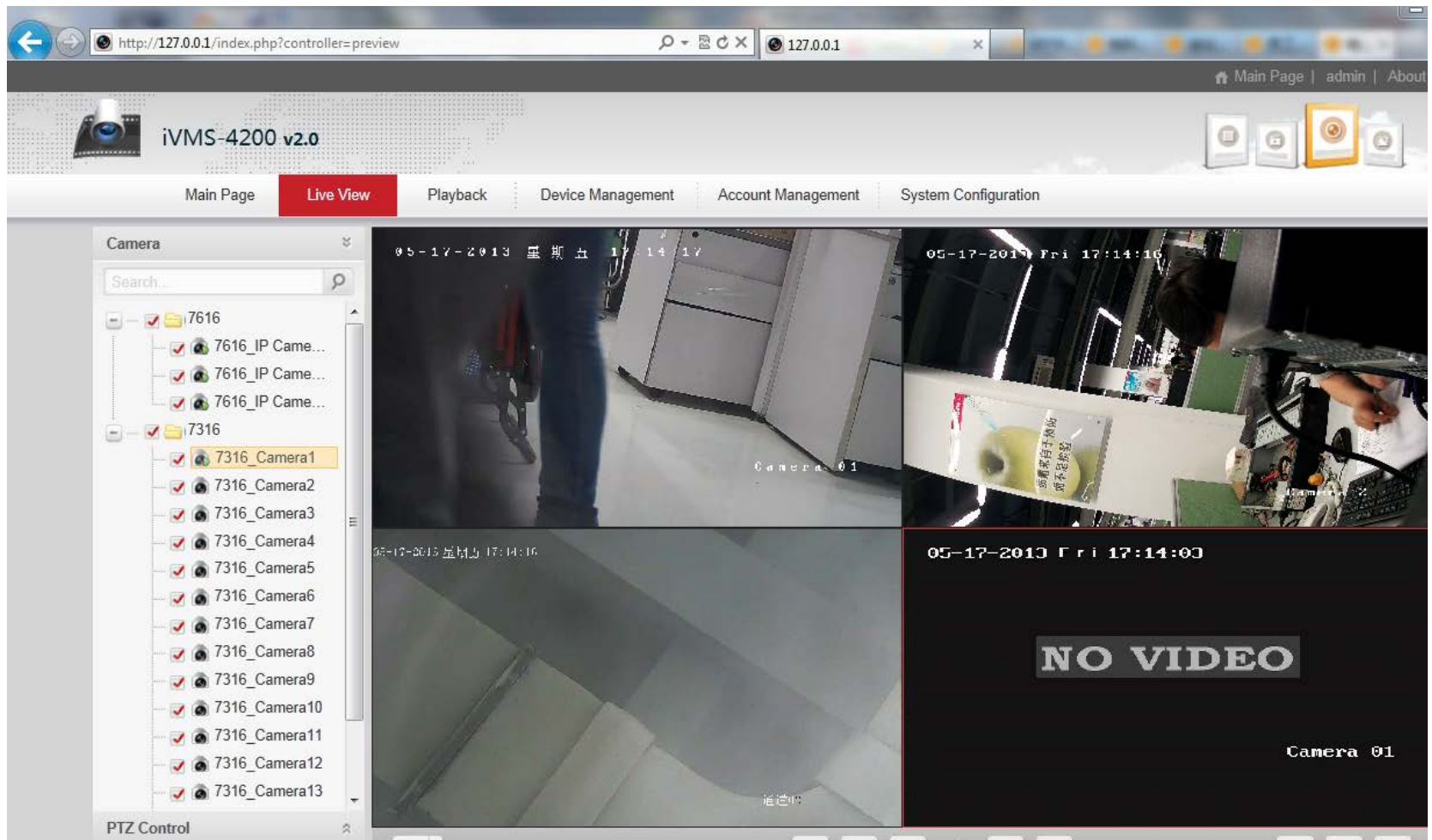
Functions and Features

Specification

Embedded Web Server

HIKVISION

- iVMS-4200 client can be accessed via the web browser for live view, playback, and management.



Control Panel

HIKVISION

- There are 2 categories in control panel: one is operation, the other is management. Now it's easy to find what you want to operate.

Operation and Control



Main View

Display video preview, playback and operation functions.



Remote Playback

Searching and playback of remote record files and the related playback operation.



E-map

Adding, modifying, deleting, and basic operations of E-map.

Maintenance and Management



Device Management

The management of the devices and groups: adding, deleting, and the configuration of the resources.



Event Management

Configuration of alarm, abnormal parameters and linkage actions of the servers.



Record Schedule

Configure the recording schedule and related parameters.



Account Management

The adding, editing, deleting of the remote client users.



Log Search

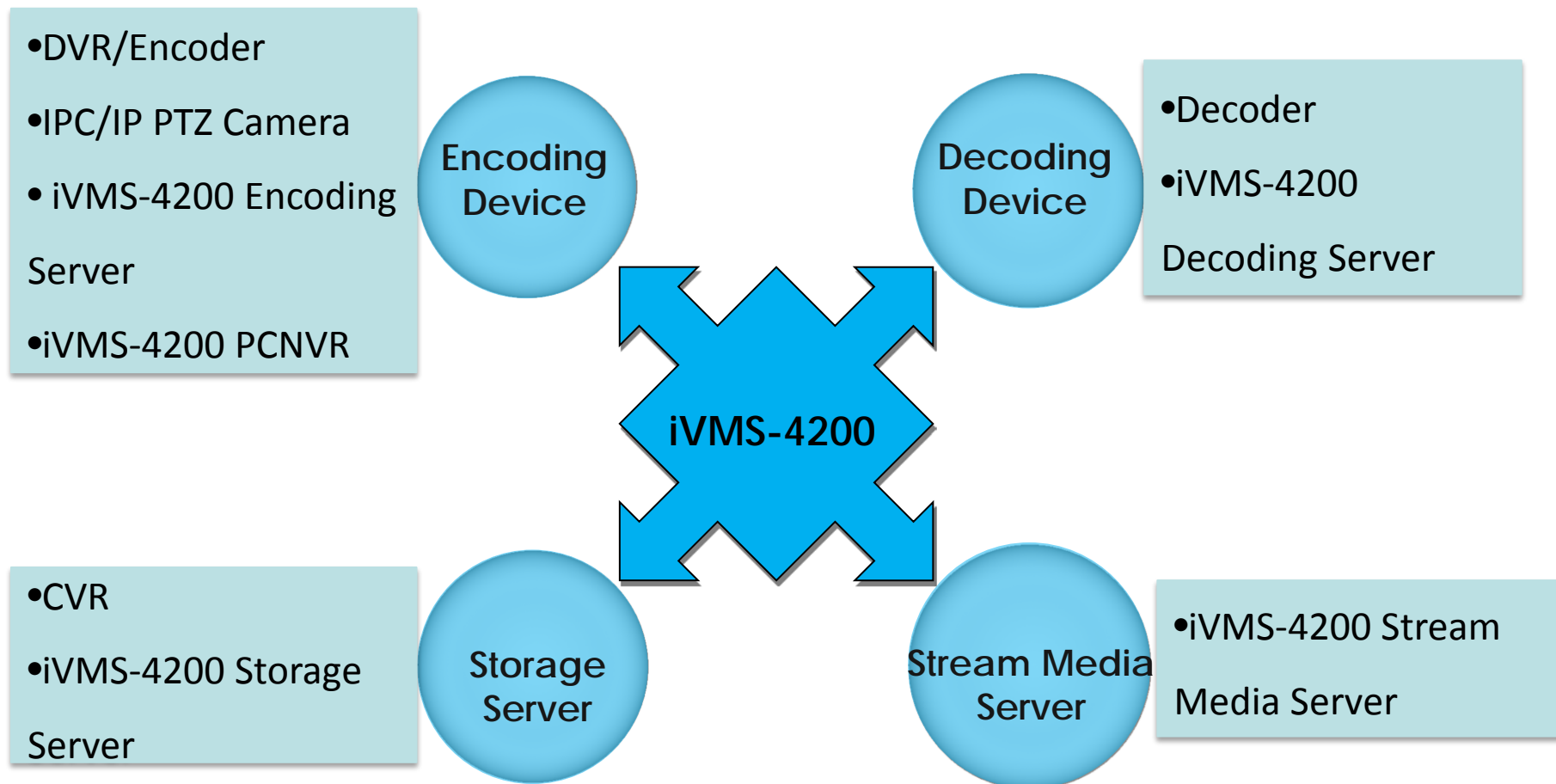
Log Search: Search, view and backup local and remote logs.



System Configuration

Configure general parameters.

- iVMS-4200 contains different server types, handling different device types.



Add Device

HIKVISION

- Support online detection and manual add, manual add includes add by IP/Domain, IP Segment, HiDDNS, and IPServer.

The screenshot displays the Hikvision management interface. The top section, 'Device for Management (3)', contains a table of manually added devices. A red box highlights the 'Add Device' button, with an arrow pointing to it labeled 'Manual add'. Another red box highlights the status icons (Net Status, HDD Status, Recording) for the three devices, with an arrow pointing to it labeled 'Show the work status of added device'. The bottom section, 'Online Device (5)', shows a table of devices detected online. A red box highlights this entire section, with an arrow pointing to it labeled 'Online detection'.

Device for Management (3)

Nickname	IP	Device Serial No.	Net Status	HDD Status	Recording
2132	172.6.16.80	DS-2CD2132-I0120130205CCRR416819655	🔴	🔴	🔴
7316	172.6.16.73	DS-7316HI-ST1620110823BBCH404577834WCVU	🟢	🔴	🔴
7616	172.6.16.116	DS-7616N-SE/P1620130503BBRR416849084WCVU	🟢	🟢	🔴

Manual add

Show the work status of added device

Online detection

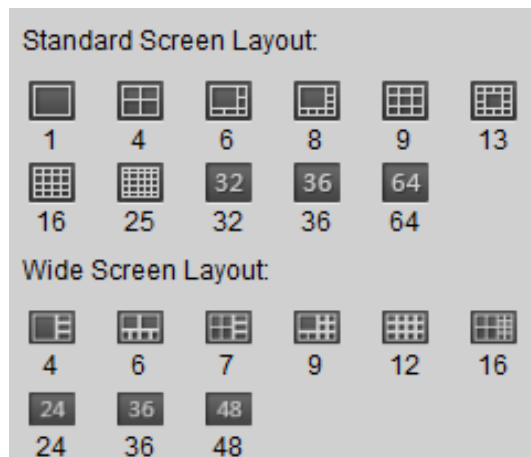
Online Device (5)

IP	Device Type	Port	Device Serial No.	Added
172.6.16.73	DS-7316HI-ST	8000	DS-7316HI-ST1620110823BBCH404577834WCVU	Yes
172.6.16.116	DS-7616N-SE/P	8000	DS-7616N-SE/P1620130503BBRR416849084WCVU	Yes
192.168.1.100	DS-2CD8464C-CV1	8000	DS-2CD8464C-CV10120130116CCRR415927144	No

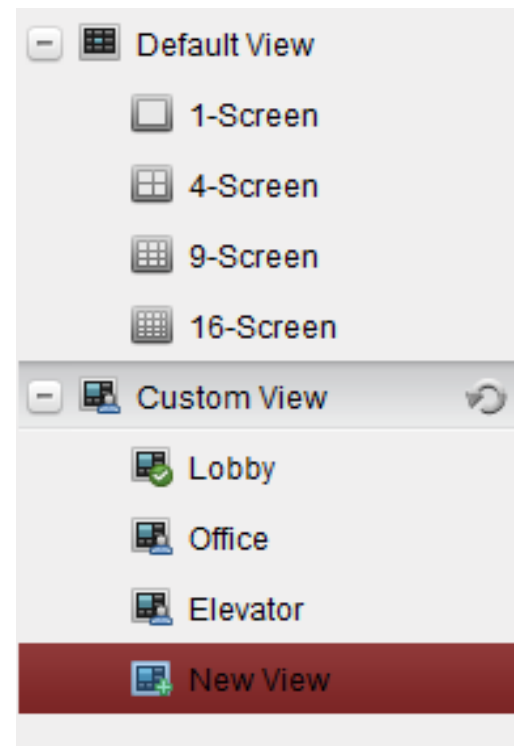
Live View Modes

HIKVISION

- Support various screen layouts
- Support default view and custom view profile



Screen layouts



Default and custom view

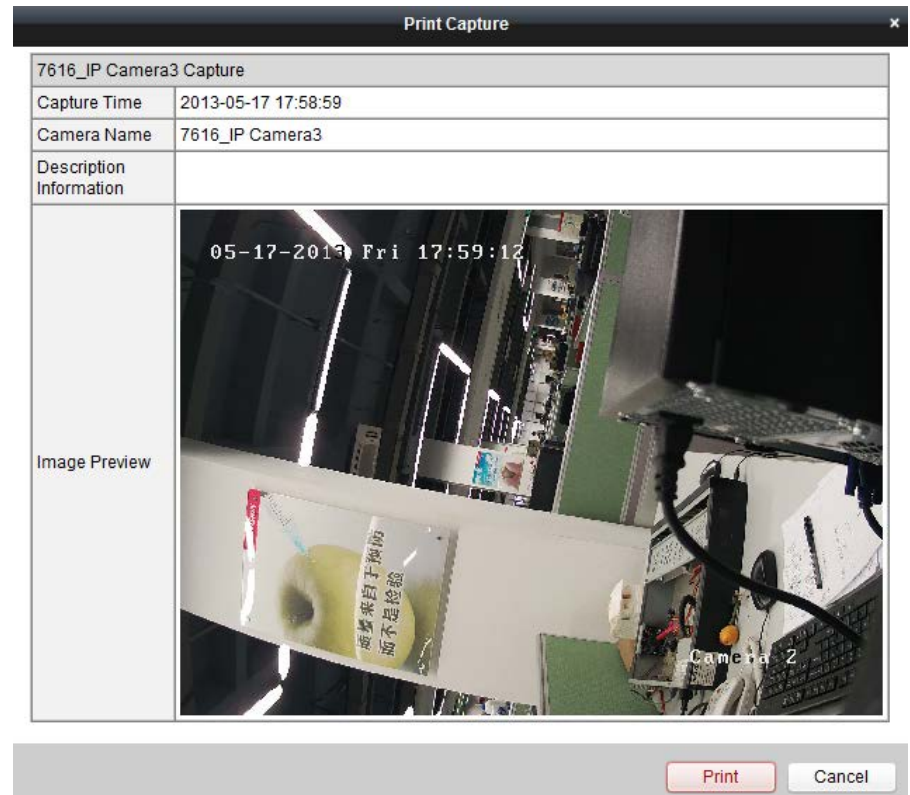
Various Live View Functions

HIKVISION

- Various and powerful operations during live view such as two-way audio, time synchronization, print and email capture, PTZ, digital zoom, etc.



Various functions

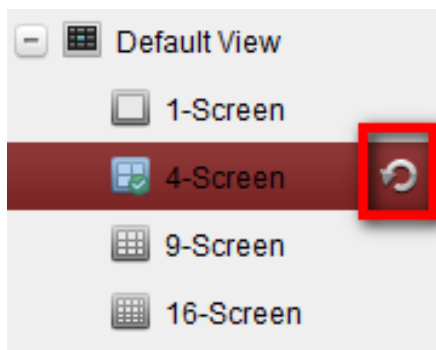


Print capture

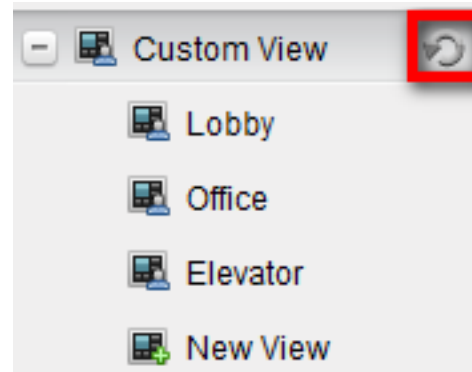
Cycle Play

HIKVISION

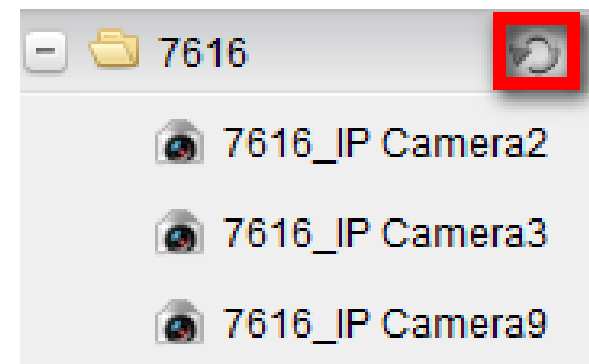
- Support three different ways of cycle play
(Interval: 20s-5minutes)
- 1. 1/4/9/16-screen cycle play among all imported cameras
- 2. Cycle play among all the custom view profiles
- 3. Cycle play among selected camera group in one selected window



cycle play 1



cycle play 2

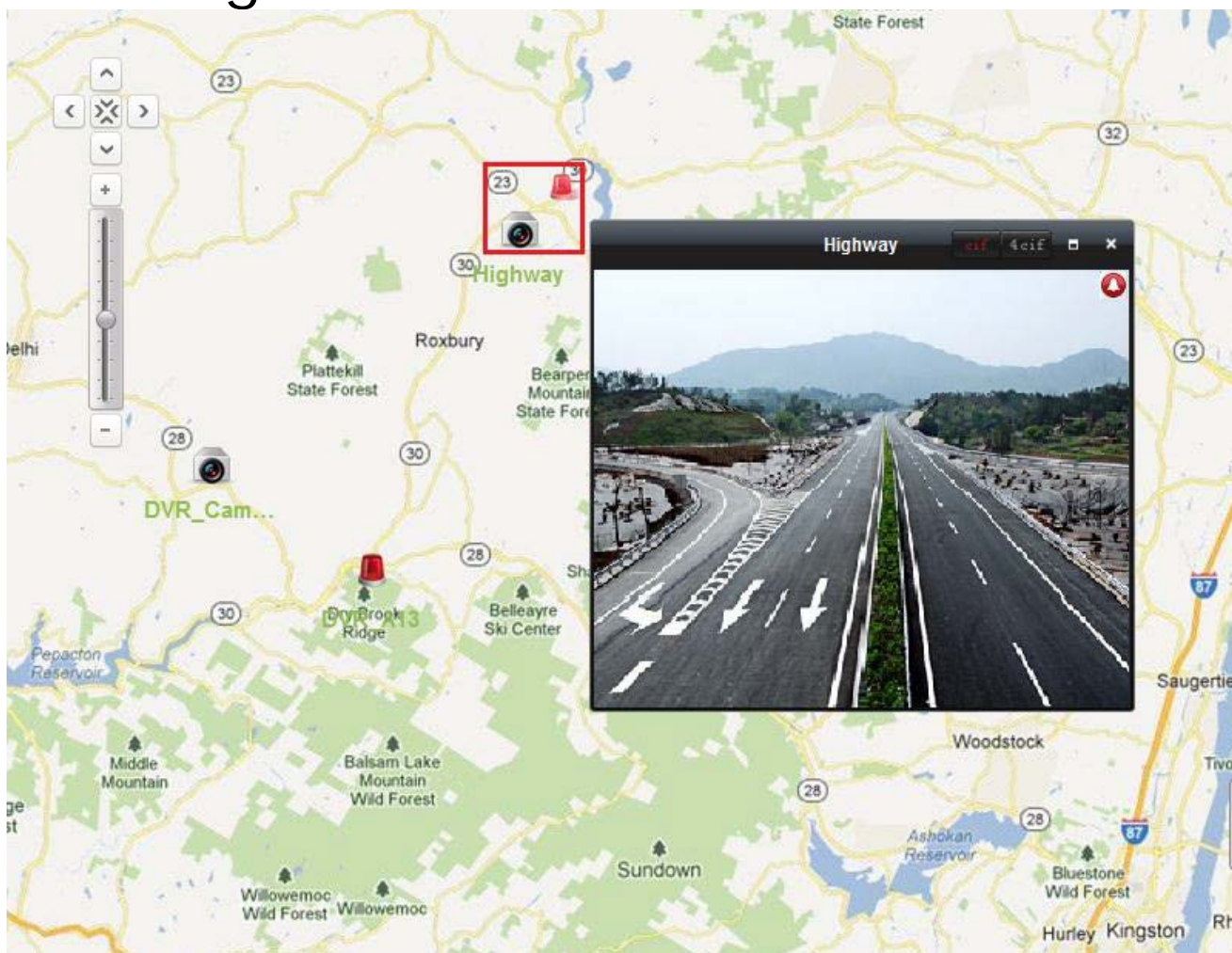


cycle play 3

E-map

HIKVISION

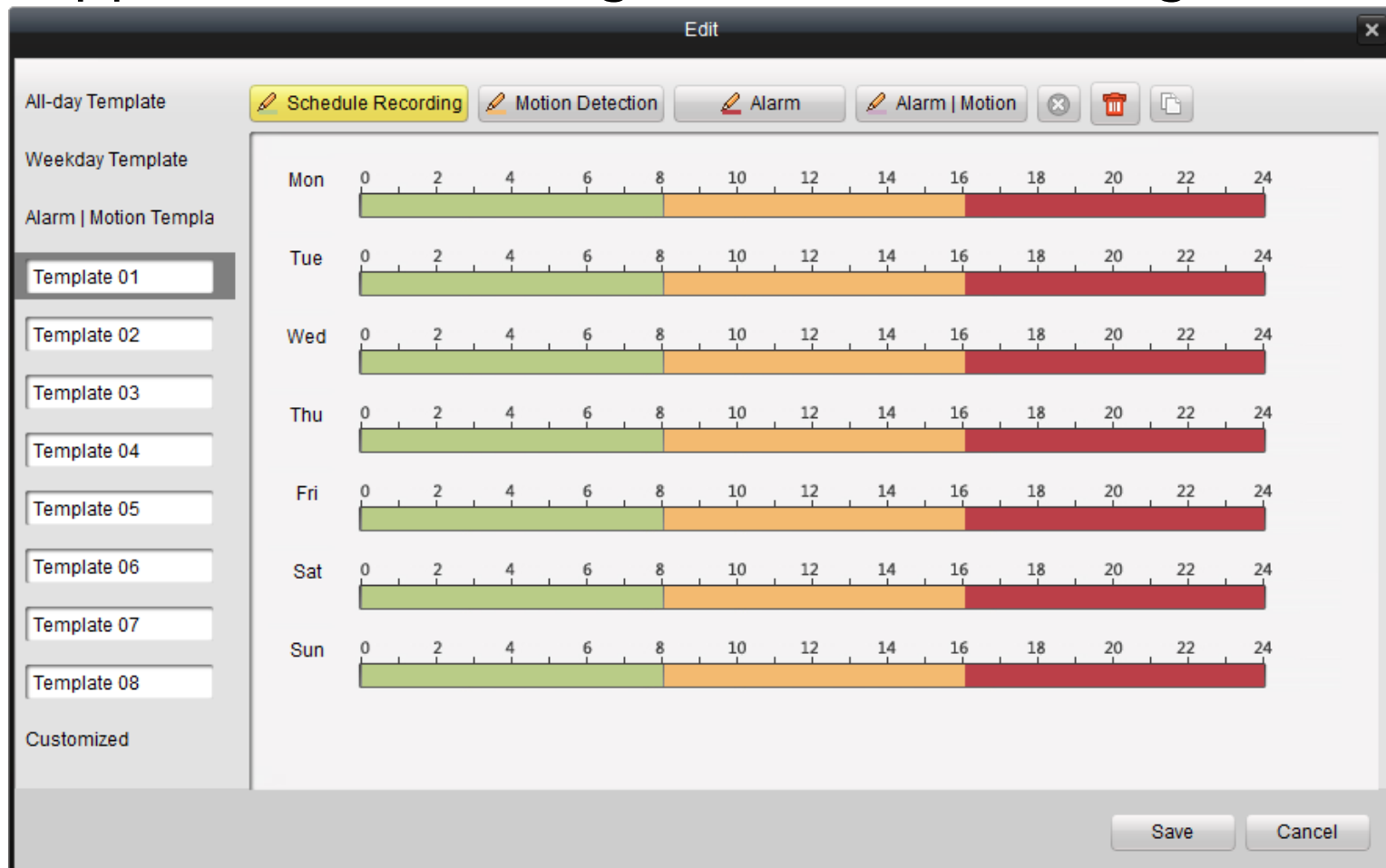
- Support add camera hot spots, alarm input spots, and hot regions.



Recording

HIKVISION

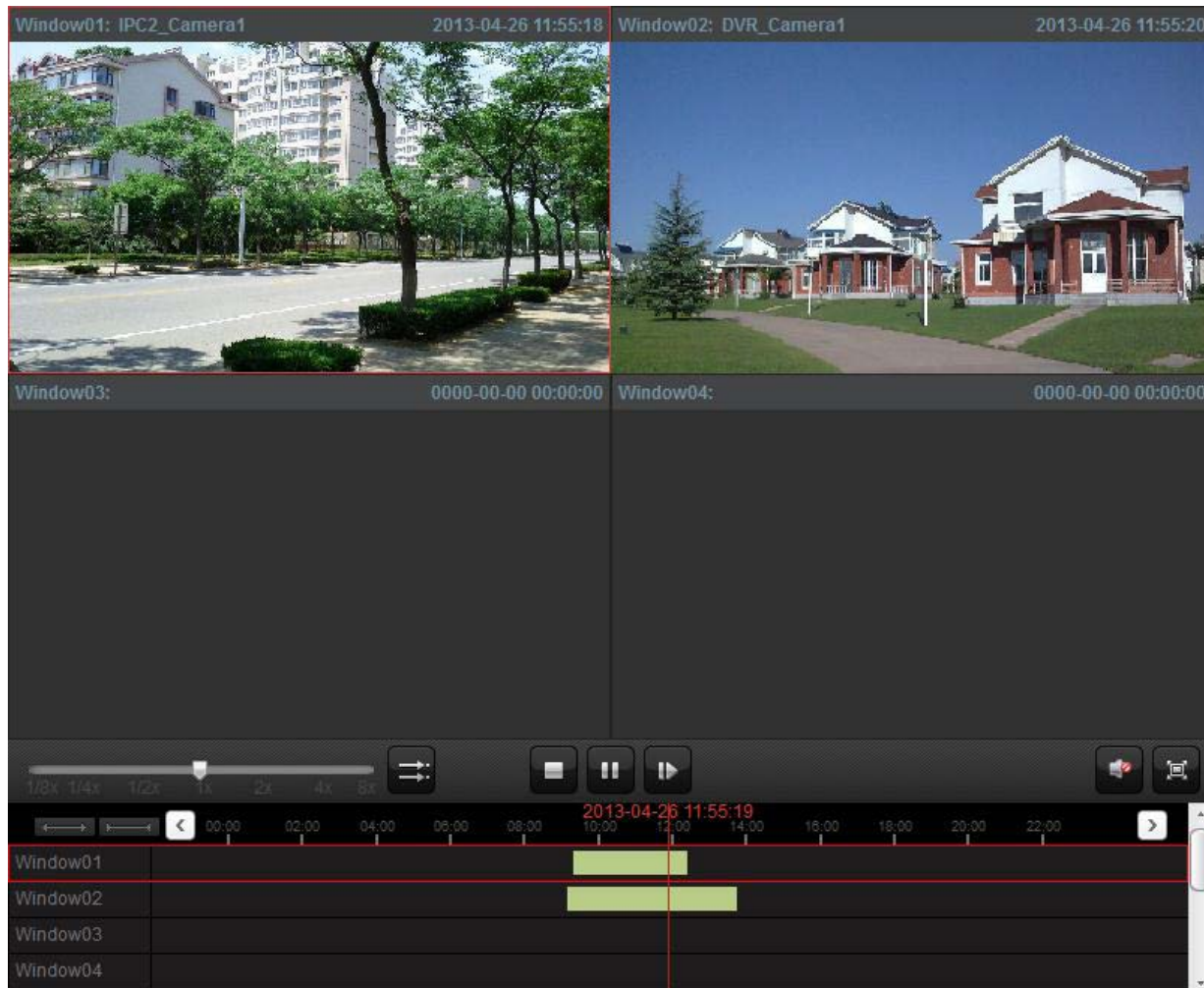
- Support set remote device recording schedule
- Support set recording schedule of storage server



Remote Playback

HIKVISION

- Support up to 16-ch synchronous playback



Download

HIKVISION

- Support multiple download modes of remote record files: by files, by date, and by tag.

File Download(7616_IP Camera2)

Download by Files Download by Date Download by Tag

	Start Time	End Time
<input checked="" type="checkbox"/> Duration 1	2013-05-17 00:00:00	2013-05-17 16:21:20
<input type="checkbox"/> Duration 2	2013-05-17 00:00:00	2013-05-17 16:21:20
<input type="checkbox"/> Duration 3	2013-05-17 00:00:00	2013-05-17 16:21:20
<input type="checkbox"/> Duration 4	2013-05-17 00:00:00	2013-05-17 16:21:20

The Selected Files Size: 4.5 MB

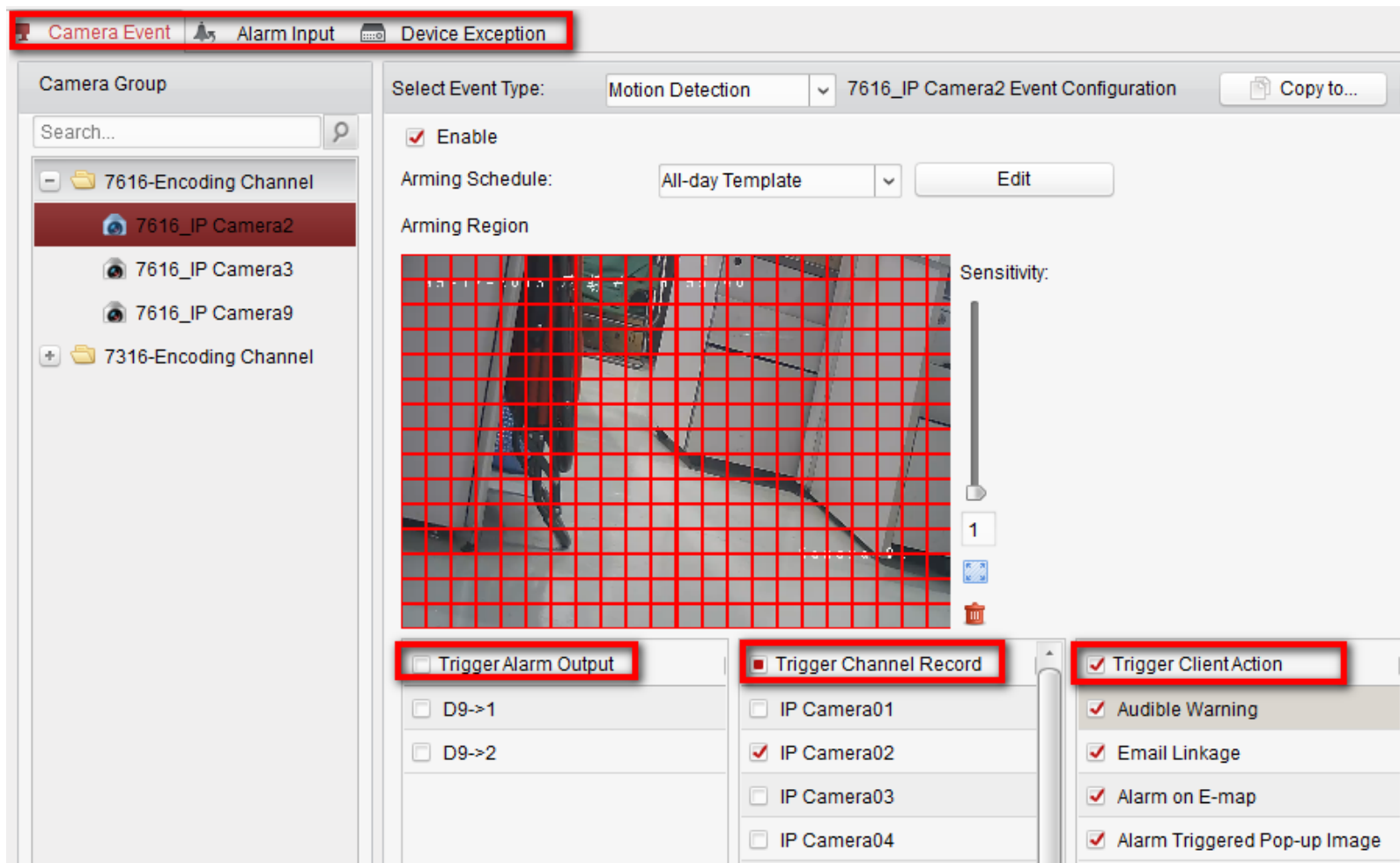
Free Disk Space Size: 654.9 MB

Flow Ctrl(kbps): Set Download Stop Cancel

Event Management

HIKVISION

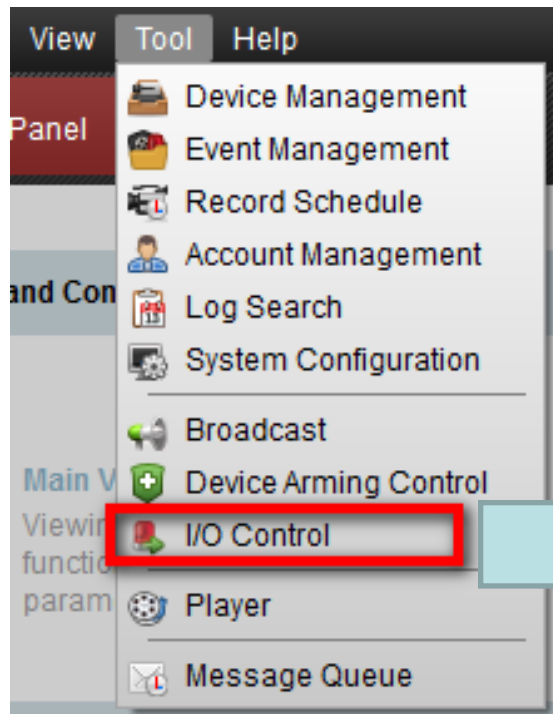
- Central management on camera events, alarm input, device exception.



Alarm Output Control

HIKVISION

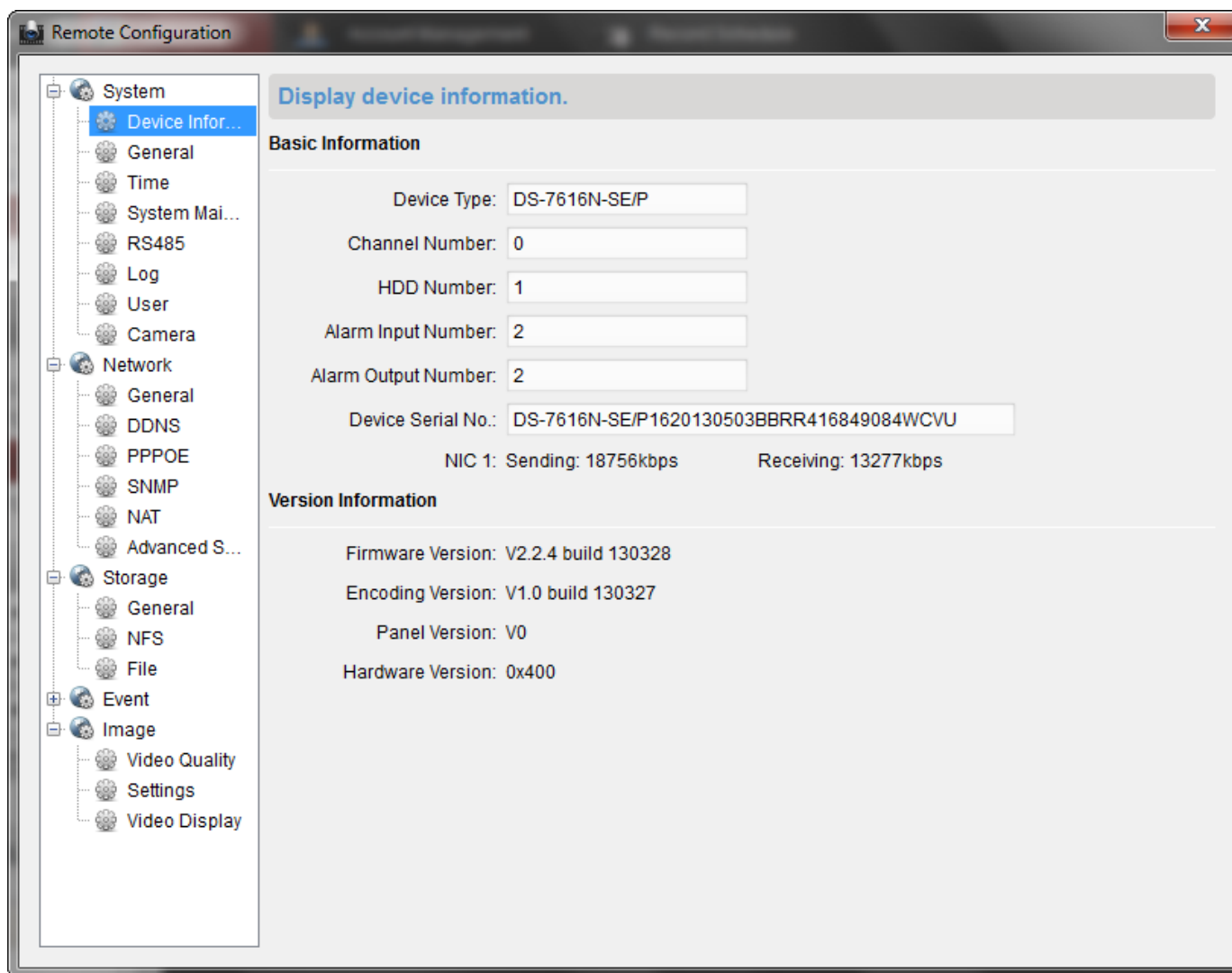
- Manually turn on or off the alarm outputs of device.



Remote Configuration

HIKVISION

■ Remote configuration of added device



Account Management

HIKVISION

- Support multi-role user management, and users could be assigned with different permissions.
- Super User > Administrator > Operator

Add User

User Information

User Type: Administrator User Name:

Password: Confirm Password:

User Live View related

☒ All

☒ Live View

☒ PTZ Control

☒ Capture

☒ Record

☒ Camera Settings

☒ Play Back Remote Record File(s)

☒ Download Remote Record File(s)

☒ Remote Recording

☒ Two-way Audio

☒ Synchronization

☒ Picture Backup

☒ IPC1

☒ IPC1_Camera1

☒ IPC2

☒ DVR

☒ IP Dome

Default Permission Save

Powerful Log Management

HIKVISION

- Support search, filter and backup client log and device remote log.

The screenshot displays the Hikvision Log Management interface. On the left, the 'Log Search' sidebar includes radio buttons for 'Client Logs' and 'Server Logs' (selected), a 'Servers' section with a search bar and a list of encoding devices (2132, 7316, 7616), and time selection fields for 'Start Time' (2013-05-17 00:00:00) and 'End Time' (2013-05-17 23:59:59). The main 'Server Log Lists' area features a 'Log Filter' button, a 'Backup Log' button, and a 'Filter' icon. Below these are input fields for 'Filter by Keyword' and 'Filter by Condition', along with dropdowns for 'Major Type' and 'Minor Type'. The central table displays log entries with columns for 'Operation Time', 'Major Type', 'Minor Type', 'Remote Operator', 'Local Operator', and 'Remote HOST Address'. The bottom status bar shows 'Total 2813', 'Page 1/235', and a pagination control with buttons for page numbers 1 through 7, an ellipsis, and 235, along with 'Page' and 'Go' buttons.

Operation Time	Major Type	Minor Type	Remote Operator	Local Operator	Remote HOST Address
2013-05-17 11:21:40	Exception	IPC disconnected			0.0.0.0
2013-05-17 11:21:40	Exception	IPC disconnected			0.0.0.0
2013-05-17 11:21:40	Exception	IPC disconnected			0.0.0.0
2013-05-17 11:21:40	Exception	IPC disconnected			0.0.0.0
2013-05-17 11:21:28	Operation	Remote Status Getting	admin		172.6.16.10
2013-05-17 11:21:28	Operation	Remote Parameter Getting	admin		172.6.16.10
2013-05-17 11:21:28	Operation	Remote Arming	admin		172.6.16.10
2013-05-17 11:21:26	Operation	Remote Login	admin		172.6.16.10
2013-05-17 11:21:26	Operation	Remote Parameter Getting	admin		172.6.16.10
2013-05-17 11:21:26	Operation	Remote Parameter Getting	admin		172.6.16.10
2013-05-17 11:21:19	Operation	Local Login		admin	0.0.0.0
2013-05-17 11:21:16	Operation	Power On			0.0.0.0

- Multiple display resolution options: 1024*768, 1280*1024, 1440*900, 1680*1050, full screen.
- Support import and export database, easy to save and copy configuration files.
- Self define the saving path of the downloaded video file, capture, and configuration file.
- Soft auto-run and resume last live view.
- Set up shortcuts of PC keyboard and USB joystick for frequently used functions.
- Broadcast over the device.
- ...

Contents

HIKVISION



Brief Introduction

Functions and Features

Specification

Specification of iVMS-4200 Client

HIKVISION

iVMS-4200 Client	
Manageable Encoding Device	256
Max. Group	256
Max. Imported Camera	1024
Max Camera Number in One Group	64
Max. Storage Server	16
Max. Stream Media Server	16
Max. Decoding Device	64
Max. Live View Camera	64
Max. Live View Split Screen	4
Max. User	51
Max. Playback Channel	16
Max. Simultaneous Download Task	16
Max. E-map	256

Specification of server

HIKVISION

Storage Server	Recording Performance	64*2Mbps
	VOD Performance	64*2Mbps
	Max. User	32
	Max. Connected iVMS-4200	No Limitation
Stream Media Server	Incoming Connection	64*2Mbps
	Outgoing Connection	200*2Mbps

Recommended PC Configuration

HIKVISION

PC Configuration	The maximum amount of accesses supported for live view channel				
	CPU: Intel Core i7-3770K 3.50GHz Memory: 4GB Graphic card: AMD Radeon HD 6700 Series Operating System: Windows 7 (32 bit)	CPU: Intel Core i5-2320K 3.00GHz Memory: 4G Graphic card: NVIDIA GeForce GT 430 Operating System: Windows 7 (32 bit)	CPU: AMD Phenom II X4 965 3.40GHz Memory: 4G Graphic card: ATI Radeon HD 5770 Series Operating System: Windows XP SP3	CPU: Intel Core 2 Quad Q8200 2.33GHz Memory: 4G Graphic card: NVIDIA GeForce 9600GT Operating System: Windows XP SP3	CPU: Intel Core 2 Duo E8400 3.00GHz Memory: 2G Graphic card: ATI Radeon HD 4800 Series Operating System: Windows XP SP3
(single P-frame)					
(352*288)*768K*25	64	64	64	63	48
(640*480)*1.5M*25	57	50	48	25	22
(704*576)*2M*25	49	38	36	19	17
(960*576)*2M*25	36	26	27	12	12
(1280*720)*6M*25	23	18	16	8	7
(1280*960)*6M*25	20	15	13	6	5
(1600*1200)*8M*25	12	8	8	3	3
(1920*1080)*9M*25	12	7	7	3	3
(2048*1536)*13M*25	8	6	6	2	2
(2560*1920)*7M*6	6	6	6	5	4

Note: The parameters recommended above are for reference only.



Thanks!